



Ozarka College Connection

VOLUME IX, ISSUE 16

NOVEMBER 1 - NOVEMBER 12, 2010

INSIDE THIS ISSUE:

From the Desk of Dr. Dawe	2
Storm Spotter Class	2
Ozarka Hosts College Planning Day	3
Arkansas Craft School Hosting Gala	3
Ozarka Community Cinema	4

Evaluation Team Visit November 15-17



From the Kitchen

Sign up for Text alerts each morning for the daily menu in my.Ozarka

Now serving an entrée or choice of Salad Bar, Chicken Strips, or deli sandwich.

The menu is online so check it out!
Lunch Served 11AM-12:30 PM

Breakfast available 7:00 a.m. - 10:00 a.m.

Early Registration for Spring 2011

Ozarka College will begin early registration for returning students on November 8. Those students are required to meet with their advisor to plan a class schedule prior to registration for the spring 2011 semester. The course schedule will be posted online at www.ozarka.edu.

For any new students who plan to enroll at Ozarka College during the upcoming spring semester, there will be an early registration on Friday, November 19 at the off-campus sites in Ash Flat and Mountain View; and the main campus in Melbourne. New students will have the opportunity to meet with an advisor and plan a course schedule. New students planning to take Math and English courses must have placement scores, by taking the Compass placement test or

have ACT scores on file. The Compass test will be given on the 19th at 9:00 a.m., or students may schedule a placement test by contacting Ozarka's testing coordinator at 870-368-7371.

Ozarka College will have student service personnel in the new Mammoth Spring facility located at 520 Archer Street, beginning November 22-24 to advise and register new students wanting to take classes in Mammoth Spring. Registration will continue there each Monday, Tuesday and Wednesday through December 15. Compass testing will be given on November 29 at 3:00 p.m. Returning Mammoth Spring students will be assisted with registration for spring November 22-23 from 4:00 – 7:00 p.m. at Mammoth Spring High School.

An open house is planned at the new facility in Mammoth Spring on November 29 from 3:00 – 6:00 p.m. and registration for classes will be available during that time as well.

New students planning to attend any Ozarka registration should submit an Application for Admission either online at ozarka.edu or by contacting the admissions office for a copy. Spring classes begin on January 10, 2011.

For further information, contact Ozarka College at (870) 368-7371 or toll free 1-800-821-4335.

Around Campus

- **CAAP Testing** - November 3 at Noon; November 4 at 8:00 a.m.; Contact Judy Sharp for info 368-2049.
- **Culinary Gourmet Night** - Thursday, November 11.
- **Ozarka Community Cinema** Saturday, November 20, 2010. Movie: *Inception*. Showtimes TBA.
- **TRIO SSS Money Management and Math Lab** - Each Wednesday in Ash Flat 3:30 in AF109 (money) and 4:30 AF106 (math)
- **American Red Cross Blood Drive** Tue. November 2 in Melbourne 10-3:30 Wed. November 3 in Mtn. View 9-1 Tue. November 9 in Ash Flat 9-1
- **HLC Accreditation Team Visit November 15-17**

FOR THE MOST CURRENT EVENTS AROUND CAMPUS CHECK THE ONLINE CAMPUS CALENDAR AT WWW.OZARKA.EDU UNDER NEWS & EVENTS



Young students from the Ozarka Kids Academy trick-or-treated at the College on Friday. Several individuals and departments set up and decorated tables in the dining room of the Administration building. Fun was had by all who participated!



From the Desk of Dr. Dawe

“Their (HLC) findings will confirm the superb job that our faculty, staff and administration are doing to provide world-class education to our students.”

*-Dr. Richard Dawe
President*

College Update from President Dr. Dawe

The fall 2010 semester is passing quickly and it is marked by significant enrollment growth and opportunity. Enrollment is up by 15 percent compared to last fall semester (1,573 total) and Full Time Equivalent (FTE) has jumped by 23 percent. This is the second fastest growth of all two and four year public colleges and universities in Arkansas and it is an important metric for Ozarka College. With fast gains in enrollment also comes pressure to ensure, above all else, that we maintain quality educational programs, instruction and student services. Obvious issues like keeping up with enough parking facilities are also important. I am confident we are maintaining pace with the growth but it is important that everyone continues to communicate the needs of their respective areas openly and often to ensure we make prudent resource decisions and that we are able to anticipate challenges and requirements before they re-

sult in problem situations that we must react to in haste. As much attention as enrollment numbers receive at Ozarka, in Arkansas, and throughout the nation it is far more important that we refine our focus on graduation rates, retention and all measures of student success.

Developmental education is another important area that we must continue to improve in the future. The state and Ozarka College spends a great deal of time and funding on our students' developmental education requirements to prepare them for college-level course work and we must continue to do as good a job as possible in this area. Too many learners throughout Arkansas end up wasting Pell funding and then are often unable to continue to pursue their educational goals. Our developmental ed. staff are some of the best in the business but we have to assist them by refining and enhancing their support systems.

On another very important note, our Higher Learning Commission (HLC) accreditation visiting team will be with us November 15-17 and will be visiting with many students, faculty and staff during their short but important stay to validate our self study report. Their findings will confirm the superb job that our faculty, staff and administration are doing to provide world-class education to our students. I am proud of the work the entire College community has accomplished in preparing the self study and know that everyone will be prepared to provide their full support to the HLC team. It is wonderful to be a part of the Ozarka College family and to share in service to our Ozarka students and our communities!

Richard L. Dawe, Ph.D.
President, Ozarka College

Storm Spotter Class at Ozarka College

The Ozarka College Division of Continuing Education will offer a Storm Spotters course presented by the National Weather Service out of Little Rock, on Tuesday evening, November 9, 2010, from 6:30 p.m. until 9:00 p.m.

This three hour class will take place at Ozarka's main campus in Melbourne in the lecture hall of the John E. Miller Educational Complex. There is no cost to attend, but space is limited and pre-registration is required. This class will be beneficial to

provide training to local law enforcement officers, emergency management employees, and others in the community interested in learning more about severe weather and spotting storms.

Students will learn the structure of a severe storm, how a storm develops, and how to inform the National Weather Service of a severe storm. At the completion of the course, students will receive a certificate, valid for five years, as an official storm spotter for the National Weather Service.

With limited space, please call the Continuing Education Department to reserve a seat for this course at 870-368-7371 or email kover-turf@ozarka.edu or mdelong@ozarka.edu.



Ozarka Hosts College and Career Planning Day



The Ozarka College Admissions Department hosted the annual College Planning Day on October 26, 2010 in the John E. Miller Education Complex. College, university, financial and armed forces representatives, as well as various other agencies were set up to offer information to local high school seniors throughout the morning.

There were approximately 330 high school seniors from 10 area high schools in attendance at the Ozarka hosted ArkACRAO (Arkansas Association of College Registrars and Admissions Officers) College and Career Plan-

ning Day. Those schools included Calico Rock, Izard County Consolidated, Mammoth Spring, Melbourne, Mountain View, Rural Special, Salem, Shirley, Timbo, and Viola.

The Admissions Department, with help from Ozarka's remarkable Student Ambassadors and many other Ozarka faculty and staff assisted with the entire program to make the event a success.

Ozarka administration, staff and faculty members, Ron Helm, Kim Whitten, Bonnie Crider, Ronny Rush, Rick Dowdle, Denny Elrod, Allen Vickery, and student-worker Jonathan Stroud played a big role in assisting with the event. Ozarka's Director of Admissions, Zeda Wilkerson and Admissions Assistant, Wanda McConnaughay, coordinated the program.

A key element of the success of Ozarka's College Day each year is the hospitality room provided by Culinary Arts for the high school counselors, bus drivers, college representatives and other guests who attend the event. Instructors, Mimi Newsome and Eric Smith, along with the dedicated culinary students offered first-rate food and service throughout the event.



The Admissions Department, with help from Ozarka's remarkable Student Ambassadors and many other Ozarka faculty and staff assisted with the entire program to make the event a success.

Arkansas Craft School to Hold Fundraising Gala November 5

The Arkansas Craft School announces a Fundraising Gala set for Friday November 5, starting at 6:30 p.m. at Country Time Dining and More in Mountain View. The Gala will feature a seafood buffet, live music featuring *The Acousticatz*, a live auction of hand-crafted items to benefit the School's scholarship fund, a silent auction, a raffle for a mandolin and door prizes.

Headlining the musical entertainment is *The Acousticatz*. This band offers a refreshing, wholesome approach that crosses demographic lines and embraces young and old alike. They were Arkansas State winners and national semifinalists of the Colgate Country Showdown. Opening act is *The Improbable Ensemble* featuring John Van Orman, Jeff Glover and Crystal McCool.

The live auction will feature hand-crafted creations by some of the Arkansas Craft School's most talented instructors and students including Thomas Mann, Shadow May and Nick Cook. Find the perfect Christmas gift for that special someone at a fraction of the retail price. The Arkansas Craft School provides scholarships to students who would otherwise be unable to attend due to financial restraints, and the auction provides a way for these students to give something in return. Proceeds from the auction will directly benefit the scholarship fund.

Tickets are \$25.00 per person or \$45.00 per couple, and may be purchased at Aunt Minnie's Yellow House, Centennial Bank, Citizen's Bank, First Service Bank, Mountain View Music and the White River Hoedown. Or call the Arkansas Craft School at (870) 269-8397.

The Arkansas Craft School, located in Mountain View, Arkansas is dedicated to the education of aspiring and practicing craft artisans for success in the Creative Economy. The Craft School partners with Ozarka College which offers Continuing Education credits for all of its courses. Support for the Arkansas Craft School is provided, in part, by the Arkansas Arts Council, an agency of the Department of Arkansas Heritage, and the National Endowment of the Arts.



Ozarka College

P.O. Box 10
218 College Drive
Melbourne, AR 72556

**Our Mission is to
Provide Life-Changing
Experiences Through
Education.**

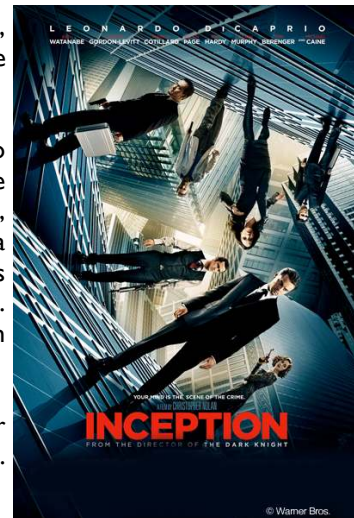


Ozarka Community Cinema Presents *Inception* and *Polar Express*

After a successful Cinema night in October with the children's summer hit, *Despicable Me*, the next movie has been scheduled for Saturday, November 20: the blockbuster, *Inception*.

This sci-fi action film stars Leonardo DiCaprio as Dom Cobb, a skilled thief who travels around the globe and into the intimate and infinite world of dreams. He steals valuable secrets from deep within the subconscious during the dream state, when the mind is at its most vulnerable. Cobb's rare ability has made him a coveted player in this treacherous new world of corporate espionage, but it has also made him an international fugitive and cost him everything he has ever loved. He is offered one last job that could give him his life back but only if he can accomplish the impossible inception.

General admission ticket price is \$4.00, with a discounted ticket price of \$3.00 for children aged 12 and under, senior citizens, and Ozarka students with student ID. Doors will open 30 minutes prior to show times and concessions will be available.



On December 3, the movie will be the new classic holiday film, *Polar Express*. This movie will be shown free as part of Ozarka's Holiday open house event beginning at 5:00 with pictures and gifts with Santa, along with other activities. The movie will begin at 7:00 p.m. This event is open to the public and will be a great way to kick off the holiday season in December! Watch upcoming issues of the *Connection* for more details.

Copyright laws prohibit Ozarka from releasing the name of the movie in local media. Future movie titles and more information is always available on the Ozarka College Facebook page at www.ozarka.edu/facebook, the Ozarka College homepage at www.ozarka.edu, or contact Ozarka College at 870-368-7371.